

Free Guitar Books: www.hochweber.ch

Jürg Hochweber

Ukulele in Action (2)



14 effektvolle Solo-Stücke für Fortgeschrittene
14 Effective Solo Pieces for Advanced Players

© free under the Creative Commons-License:
creativecommons.org/licenses/by-nd/4.0/deed.en



Lieder hören /
Listen to the songs:
www.hochweber.ch/ukulele/ukulele2.html

„Ukulele In Action (2)“

Inhalt / Content	page
- Schlagzeile / <i>Headline</i>	03
- Winkelzüge / <i>Dodges</i>	04
- Du bist dran! / <i>It's Your Turn!</i>	05
- Gang und gäbe / <i>Common Practice</i>	06
- Malagueña	07
- Was wir wollen / <i>What We Want</i>	09
- Komme, was wolle / <i>Come What May</i>	11
- Flucht nach vorn / <i>A Flight Forward</i>	12
- Potztausend / <i>I'll Be Jiggered</i>	14
- Heikle Themen / <i>Sensitive Issues</i>	16
- Hoch zu Ross / <i>On Horseback</i>	18
- Mit Stil / <i>With Style</i>	20
- En el calor de la noche	22
- Offene Frage / <i>Open Question</i>	26



Jürg Hochweber 2020

Schlagzeile / *Headline*

Jürg Hochweber

Ukulele

1 0 3 0 1 2 0 2 1 0 3 0 1 1 1 1 1 0 3 0 1 2 0 2

1 0 3 0 3 3 3 5 5 5 5 5 3 3 3 3 3 3 3 3 1 1 0 0 1 1 0 0

0 0 0 3 7 7 7 8 5 3 3 1 1 1 1 0 1 3 3 3 1 1 1 0 1 3 3 3 1

Fine

4 4 4 4 6 6 6 6 5 5 5 5 0 0 0 0 1 1 1 1 0 0 0 0 3 1 0 0 3 0 0 2 0 1 3 3

0 0 0 0 1 1 1 1 2 2 2 2 2 2 2 2 1 1 1 1 0 0 0 0 1 1 1 1 3 3 3 3 0 0 0 0 1 0 3 0

1. 1 1 1 2 1 1 1 1 2 2 2 2 2 2 2 2 3 3 3 3 3 3 3 3 0 0 0 0 0 0 0 3 0 0 0 0

2. 1 1 1 2 1 1 1 1 2 2 2 2 3 3 3 3 3 0 3 0 3 0 0 0

D.C. al Fine

Winkelzüge / Dodges

Jürg Hochweber

Ukulele

C

Dm

G7

Am

A7

Dm

G7 C

Fine

Dm

Am7

F

D.C. al Fine

Du bist dran! / It's Your Turn!

Jürg Hochweber

Ukulele

C F G7

C G7 C Fine

Dm7 Em

F E7 Am Dm7

Em F D

G7 G7

D.C. al Fine

Gang und gäbe / Common Practice

Jürg Hochweber

Ukulele

G D G C G G7

C9 C E7 Am E7 Am

D Em C F#dim7

E7 Am C7 F

Fm Eb D

G D G C G

G7 Cmaj7 Am B7

Musical notation for the first system, featuring chords G7, Cmaj7, Am, and B7. The notation includes fret numbers and string numbers on a six-line staff.

Em C A D G Fine

Musical notation for the second system, featuring chords Em, C, A, D, and G, ending with "Fine". The notation includes fret numbers and string numbers on a six-line staff.

D A Em B

Musical notation for the third system, featuring chords D, A, Em, and B. The notation includes fret numbers and string numbers on a six-line staff.

C F#7

Musical notation for the fourth system, featuring chords C and F#7. The notation includes fret numbers and string numbers on a six-line staff.

Bm C#m A7

Musical notation for the fifth system, featuring chords Bm, C#m, and A7. The notation includes fret numbers and string numbers on a six-line staff.

Bm D7 D.C. al Fine

Musical notation for the sixth system, featuring chords Bm and D7, ending with "D.C. al Fine". The notation includes fret numbers and string numbers on a six-line staff.

Malagueña

Jürg Hochweber

Ukulele

0 2 2 2 0 2 3 3 3 3 0 3 2 2 2 2 0 2 3 1 3

0 2 2 2 0 3 1 3 1 0 1 0 3 2 3 0 5 5

0 2 2 2 0 2 3 3 3 3 0 3 2 2 2 2 0 2 3 1 3

0 2 2 2 0 3 3 0 6 8 5 6 8 10 8 6 5 2 2 2 2

5 6 7 6 5 6 7 2 7 5 5 5 5 8 5 5 0 5

2 3 1 3 0 3 3 3 3 1 3 3 0 0 0 0 2 2 2 2 2 2 3 5

5 6 7 6 5 6 7 2 7 5 5 5 5 8 5 5 0 5

2 3 1 3 0 3 3 3 3 1 3 3 0 0 0 0 2 2 2 2 2 2 7 5 6 8

D V

D Fine

D V

D V

Gm D7 Gm

D7 D

Gm D7 Gm

D7

G D G

G D G

Cm F

Cm Gm D

Cm A

D.C. al Fine

Was wir wollen / What We Want

Jürg Hochweber

Ukulele

Ukulele tablature for the first system. It consists of two measures. The first measure starts with a C chord (0-0-0-0) and contains a triplet of notes (1, 3, 0) on the first string. The second measure contains two F chords (0-0-0-0) with triplets of notes (1, 1, 1) and (1, 1, 1) on the first string, and triplets of notes (2, 2, 2) and (2, 2, 2) on the second string. The word 'Ukulele' is written vertically on the left.

Ukulele tablature for the second system. It consists of two measures. The first measure contains two Dm chords (0-0-0-0) with triplets of notes (1, 1, 1) and (1, 1, 1) on the first string, and triplets of notes (2, 2, 2) and (2, 2, 2) on the second string. The second measure contains two C7 chords (0-0-0-0) with triplets of notes (1, 1, 1) and (1, 1, 1) on the first string, and triplets of notes (2, 2, 2) and (2, 2, 2) on the second string.

Ukulele tablature for the third system. It consists of two measures. The first measure contains two C7 chords (0-0-0-0) with triplets of notes (1, 1, 1) and (1, 1, 1) on the first string, and triplets of notes (2, 2, 2) and (2, 2, 2) on the second string. The second measure contains two C7 chords (0-0-0-0) with triplets of notes (1, 1, 1) and (1, 1, 1) on the first string, and triplets of notes (2, 2, 2) and (2, 2, 2) on the second string.

Ukulele tablature for the fourth system. It consists of two measures. The first measure contains two A chords (0-0-0-0) with triplets of notes (1, 1, 1) and (1, 1, 1) on the first string, and triplets of notes (2, 2, 2) and (2, 2, 2) on the second string. The second measure contains two Dm chords (0-0-0-0) with triplets of notes (1, 1, 1) and (1, 1, 1) on the first string, and triplets of notes (2, 2, 2) and (2, 2, 2) on the second string.

Ukulele tablature for the fifth system. It consists of two measures. The first measure contains two F chords (0-0-0-0) with triplets of notes (1, 1, 1) and (1, 1, 1) on the first string, and triplets of notes (2, 2, 2) and (2, 2, 2) on the second string. The second measure contains two F chords (0-0-0-0) with triplets of notes (1, 1, 1) and (1, 1, 1) on the first string, and triplets of notes (2, 2, 2) and (2, 2, 2) on the second string.

Ukulele tablature for the sixth system. It consists of two measures. The first measure contains two D7 chords (0-0-0-0) with triplets of notes (1, 1, 1) and (1, 1, 1) on the first string, and triplets of notes (2, 2, 2) and (2, 2, 2) on the second string. The second measure contains two Gm chords (0-0-0-0) with triplets of notes (1, 1, 1) and (1, 1, 1) on the first string, and triplets of notes (2, 2, 2) and (2, 2, 2) on the second string.

Gm C7

Guitar tablature for Gm and C7 chords. The Gm section consists of two measures: the first measure has a triplet of 3-2-3 on the 3rd string, followed by a quarter note 0 on the 4th string, and a quarter note 1 on the 5th string; the second measure has a quarter note 1 on the 3rd string, a quarter note 1 on the 4th string, a quarter note 1 on the 5th string, and a quarter note 0 on the 6th string. The C7 section consists of two measures: the first measure has a quarter note 3 on the 3rd string, a quarter note 1 on the 4th string, and a quarter note 0 on the 5th string; the second measure has a quarter note 0 on the 3rd string, a quarter note 0 on the 4th string, a quarter note 0 on the 5th string, and a quarter note 3 on the 6th string. Vertical bar lines indicate chord changes.

C F

Guitar tablature for C and F chords. The C section consists of two measures: the first measure has a quarter note 0 on the 3rd string, a quarter note 0 on the 4th string, a quarter note 1 on the 5th string, and a quarter note 3 on the 6th string; the second measure has a quarter note 3 on the 3rd string, a quarter note 3 on the 4th string, a quarter note 3 on the 5th string, and a quarter note 0 on the 6th string. The F section consists of two measures: the first measure has a quarter note 0 on the 3rd string, a quarter note 1 on the 4th string, a quarter note 0 on the 5th string, and a quarter note 0 on the 6th string; the second measure has a quarter note 0 on the 3rd string, a quarter note 0 on the 4th string, a quarter note 0 on the 5th string, and a quarter note 0 on the 6th string. Vertical bar lines indicate chord changes. The word "Fine" is written at the end of the section.

Dm Am

Guitar tablature for Dm and Am chords. The Dm section consists of two measures: the first measure has a quarter note 8 on the 3rd string, a quarter note 10 on the 4th string, a quarter note 8 on the 5th string, and a quarter note 7 on the 6th string; the second measure has a quarter note 8 on the 3rd string, a quarter note 8 on the 4th string, a quarter note 8 on the 5th string, and a quarter note 8 on the 6th string. The Am section consists of two measures: the first measure has a quarter note 7 on the 3rd string, a quarter note 8 on the 4th string, a quarter note 7 on the 5th string, and a quarter note 8 on the 6th string; the second measure has a quarter note 0 on the 3rd string, a quarter note 0 on the 4th string, a quarter note 0 on the 5th string, and a quarter note 0 on the 6th string. Vertical bar lines indicate chord changes.

Dm C

Guitar tablature for Dm and C chords. The Dm section consists of two measures: the first measure has a quarter note 8 on the 3rd string, a quarter note 10 on the 4th string, a quarter note 8 on the 5th string, and a quarter note 7 on the 6th string; the second measure has a quarter note 10 on the 3rd string, a quarter note 10 on the 4th string, a quarter note 10 on the 5th string, and a quarter note 10 on the 6th string. The C section consists of two measures: the first measure has a quarter note 10 on the 3rd string, a quarter note 7 on the 4th string, and a quarter note 3 on the 5th string; the second measure has a quarter note 3 on the 3rd string, a quarter note 3 on the 4th string, a quarter note 3 on the 5th string, and a quarter note 3 on the 6th string. Vertical bar lines indicate chord changes.

Dm Am

Guitar tablature for Dm and Am chords. The Dm section consists of two measures: the first measure has a quarter note 8 on the 3rd string, a quarter note 10 on the 4th string, a quarter note 8 on the 5th string, and a quarter note 7 on the 6th string; the second measure has a quarter note 10 on the 3rd string, a quarter note 10 on the 4th string, a quarter note 10 on the 5th string, and a quarter note 10 on the 6th string. The Am section consists of two measures: the first measure has a quarter note 7 on the 3rd string, a quarter note 8 on the 4th string, and a quarter note 0 on the 5th string; the second measure has a quarter note 0 on the 3rd string, a quarter note 0 on the 4th string, a quarter note 0 on the 5th string, and a quarter note 0 on the 6th string. Vertical bar lines indicate chord changes.

Dm C

Guitar tablature for Dm and C chords. The Dm section consists of two measures: the first measure has a quarter note 8 on the 3rd string, a quarter note 10 on the 4th string, a quarter note 8 on the 5th string, and a quarter note 7 on the 6th string; the second measure has a quarter note 10 on the 3rd string, a quarter note 10 on the 4th string, a quarter note 10 on the 5th string, and a quarter note 10 on the 6th string. The C section consists of two measures: the first measure has a quarter note 10 on the 3rd string, a quarter note 7 on the 4th string, and a quarter note 3 on the 5th string; the second measure has a quarter note 3 on the 3rd string, a quarter note 3 on the 4th string, a quarter note 3 on the 5th string, and a quarter note 3 on the 6th string. Vertical bar lines indicate chord changes. The text "D.C. al Fine" is written at the end of the section.

Komme, was wolle / *Come What May*

Jürg Hochweber

Ukulele

Chords: Dm, B \flat , A7, Dm, F, F7, Gm, C7, G7, E7, Am, C7, F, D, Gm, C, A7, F, G, C, G, A

D.C. al Fine

Flucht nach vorn / A Flight Forward

Jürg Hochweber

Ukulele

Chords: G, Am7, A7, D, Bm, E, C, D, Em7, G7, F7, E, C, D, G, C#dim7, Dm, G7, C7, F, F7, E7, A7, Bm, Bbm, Am, D7

D.C. al Fine

Potztausend / I'll Be Jiggered

Jürg Hochweber

Ukulele

Dm Am Dm Am

Dm Dm

F7 Gm Dm

Gm Dm

Dm Am F Dm

Dm Am

Musical staff with guitar notation. The first measure has a capo on the 1st fret. Fingerings: 1-1-1-0-0-3-0, 3-3-3-1-1, 3-1-3-0-0-2-0, 1-1-1-0-0-3-0, 3-3-3-1-1.

Musical staff with guitar notation. The first measure has a capo on the 1st fret. Fingerings: 3-3-3-1-1-0-1, 0-0-0-1-3-1-0-1, 0-1-0-2-2-5-0-3, 3-3-3-2-2, 1-1-1, 2-2.

Musical staff with guitar notation. The first measure has a capo on the 1st fret. Fingerings: 3-0-1-2-2-0-2-1, 3-1-3-0-0-0-0, 5-8-0-3-3-0-1-3, 2-2, 1-1, 2-2.

Musical staff with guitar notation. The first measure has a capo on the 1st fret. Chord: Dm9. *Fine*. Fingerings: 7-5-2, 2-1-2-0-1-0-1-3, 0-5-0-3-0-0-0-0, 2-2-2, 1-1, 2-2.

Musical staff with guitar notation. The first measure has a capo on the 1st fret. Chord: C7. Fingerings: 3-0-3-1-0-0-0, 1-1-1-3-1-0, 3-0-2-0-1-0-1-3, 0-3-0-6, 0-0-0, 0-0.

Musical staff with guitar notation. The first measure has a capo on the 1st fret. Chord: F. Fingerings: 8-8-8-6-0-0-0, 1-1-3-1-0-2-4-1-0-2, 0-0-2-2.

Musical staff with guitar notation. The first measure has a capo on the 1st fret. Chord: A7. First ending: 1. 0-1-0-3-0-0-0, 0-1-0-4-3-0-2-1. Second ending: 2. 0-1-0-4-3-0-2-1. *D.S. al Fine*

Heikle Themen / *Sensitive Issues*

Jürg Hochweber

Ukulele

Am Dm

3/4

Em7 Am Dm

§

3 0 0 3 10 10 8 7 8 8 8 7 8 8 8 7 0 0 0 12 0

Fine

0 0 0 2 4 2 0 0 2 4 2 1 1 0 1 1 2 0

0 0 0 2 2 2 2 2 4 5 4 2 2 2 2 4 5

4 3 3 2 3 3 4 7 5 0 2 2 1 2 4 4 2 4 4 2 4 3 3 2

2 2 0 0 2 4 3 5 3 4 4 4 4 3 2 3 2 1 0 0 1 0 0 1 3 2 3 2 4 4 4 3 5 3

0 1 1 0 1 1 3 2 3 0 0 2 0 3 2 1 2 1 1 2 1 1 5 5 4 4


1. 3 0 0 4 2

2. 8 7 5 8 5 7

D.S. al Fine

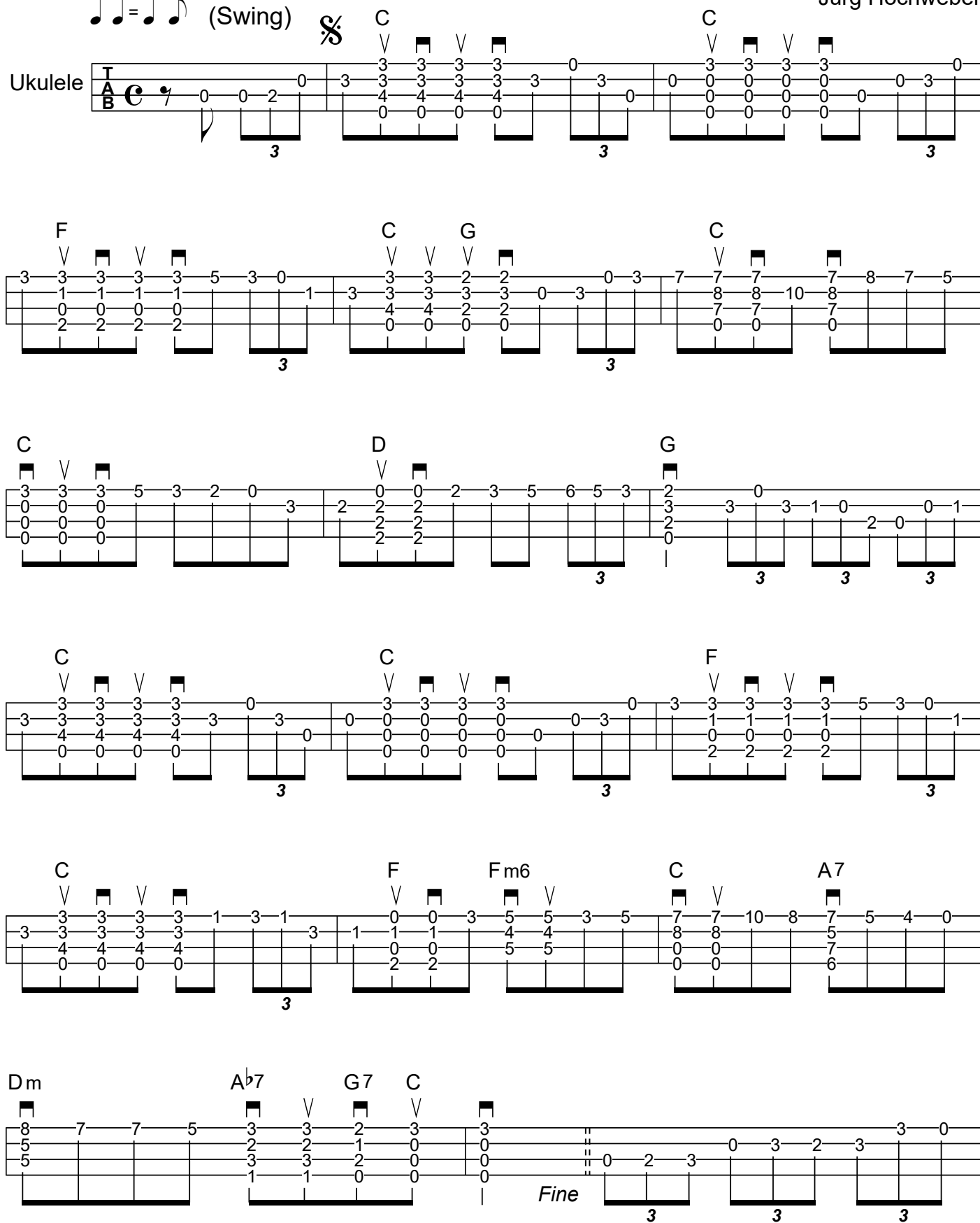
Hoch zu Ross / On Horseback

Jürg Hochweber

 (Swing)



Ukulele



Ukulele tablature for 'Hoch zu Ross / On Horseback' by Jürg Hochweber. The piece is in 7/8 time with a swing feel. The key signature has one sharp (F#). The tablature is written on a six-line staff with fret numbers 0-10. It includes various chords: C, F, G, D, G, F, Fm6, A7, Dm, and Ab7. The piece ends with a double bar line and the word 'Fine'. There are several triplet markings throughout the piece.

G7 Cm

Cm Bb7

Fm Cm D G

1. 2.

E7 Am G7

Cdim7 E7 Am

G7 C

D.S. al Fine

Mit Stil / With Style

Jürg Hochweber

Ukulele

3/4



Fine

0 1 1 1 3 0 0 1 3 1 2 1 3 0 1

1 0 1 3 1 0 1 3 2 2 1 4

0 0 0 1 0 2 3 4 0 2 3

0 0 1 2 3 4 2 2 3

1 1 2 3

2 2 2 2 2 2 2 3 2 0 3

0 2 2 3 4 2 2 3

2 3 4 3

2 0 2 0 2 4 5 4 2 4 5 4 2 0 3 2

3 2 4 2 4 2 4 5 4 2 0 3 2

3 4 4 3

3 0 2 0 3 2 1 1 1 1 2 2 2 2 4 4 4 4

1 1 1 1 2 2 2 2 4 4 4 4

0 4 2 1 1 1 1 2 2 2 2

2 4 2 1 1 1 1 2 2 2 2

2 2 2 2

1.

4 4 0 2 3 2 0 3 1 0

4 4 4 0 2 3 2 0 3 1 0

2.

4 4 2 4 5 4 2 0 2 4

4 4 4 2 4 5 4 2 0 2 4

D.S. al Fine

En el calor de la noche

Jürg Hochweber

Ukulele

Chords: D, Eb, F, Gm, Cm, Eb7, G7, Dm

Fine

Gm C7 V

This system contains two staves of music. The first staff has a treble clef and a key signature of one flat. The notes are: 3 3 0 0 | 1 1 | 0 2 1 2 | 0 1 3 0 | 1 1 | 1 1 | 1 1. The second staff has a bass clef and the notes: 4 4 0 0 | 2 2 | 2 1 2 | 0 1 3 | 3 3 | 0 0 | 0 0. Above the first staff, the chords Gm and C7 are indicated with their respective fingerings: Gm (1 1) and C7 (1 1 V 1).

F Dm V

This system contains two staves of music. The first staff has a treble clef and the notes: 0 0 0 0 | 3 3 0 0 | 1 1 | 0 1 0 | 0 1 0. The second staff has a bass clef and the notes: 1 1 1 1 | 4 4 0 0 | 2 2 | 2 0 1 3 | 4 3 | 2. Above the first staff, the chords F and Dm are indicated with their respective fingerings: F (0 0 0 0 V) and Dm (1 1 V).

A D V

This system contains two staves of music. The first staff has a treble clef and the notes: 0 0 0 0 | 0 0 0 0 | 0 0 0 0 | 2 2 0 2 0 | 0 0 0 0. The second staff has a bass clef and the notes: 2 2 2 2 | 2 2 2 2 | 2 2 2 2 | 2 2 2 2 | 2 2 2 2 | 1 2. Above the first staff, the chords A and D are indicated with their respective fingerings: A (0 0 0 0 V) and D (0 0 0 0 V).

A D V

This system contains two staves of music. The first staff has a treble clef and the notes: 0 0 0 2 0 2 | 0 0 0 0 | 2 2 2 2 | 2 2 2 2 | 2 2 2 2 | 3 0. The second staff has a bass clef and the notes: 1 1 1 1 | 2 2 2 2 | 2 2 2 2 | 2 2 2 2 | 2 2 2 2. Above the first staff, the chords A and D are indicated with their respective fingerings: A (0 0 0 0 V) and D (0 0 0 0 V).

G D V

This system contains two staves of music. The first staff has a treble clef and the notes: 2 2 2 2 | 4 5 4 7 5 4 5 4 | 0 0 0 0 | 0 2 4 2 5 4 2 0. The second staff has a bass clef and the notes: 2 2 2 2 | 2 2 2 2 | 2 2 2 2 | 2 2 2 2 | 2 2 2 2. Above the first staff, the chords G and D are indicated with their respective fingerings: G (2 2 2 2 V) and D (0 0 0 0 V).

A7 D V

This system contains two staves of music. The first staff has a treble clef and the notes: 3 3 3 3 | 2 0 4 2 0 | 3 2 0. The second staff has a bass clef and the notes: 2 2 2 2 | 2 2 2 2 | 2 2 2 2 | 3 3 3 3 | 5 3. Above the first staff, the chords A7 and D are indicated with their respective fingerings: A7 (3 3 3 3 V) and D (0 0 0 0 V). The system ends with a double bar line and a 3/4 time signature.

D V

This system contains two staves of music. The first staff has a treble clef and the notes: 5 5 5 5 | 6 8 6 5 5 5 5 5 | 5 5 5 5 | 5 5 5 5 | 6 8 6. The second staff has a bass clef and the notes: 5 5 5 5 | 6 6 6 6 | 7 7 7 7 | 6 6 6 6 | 7 7 7 7. Above the first staff, the chord D is indicated with its fingering: D (5 5 5 5 V). The system starts with a 3/4 time signature.

D A V

This system contains two staves of music. The first staff has a treble clef and the notes: 5 5 5 5 | 3 1 3 0 | 0 0 0 0 | 1 3 1 0 | 0 0 0 0 | 1 0 1 3. The second staff has a bass clef and the notes: 6 6 6 6 | 1 1 1 1 | 2 2 2 2 | 2 2 2 2 | 2 2 2 2. Above the first staff, the chords D and A are indicated with their respective fingerings: D (5 5 5 5 V) and A (0 0 0 0 V).

Dm A D V

This system contains two staves of music. The first staff has a treble clef and the notes: 5 5 5 5 | 3 1 0 | 0 0 0 0 | 1 3 | 5 5 5 5 | 6 8 6. The second staff has a bass clef and the notes: 5 5 5 5 | 1 1 1 1 | 2 2 2 2 | 2 2 2 2 | 2 2 2 2. Above the first staff, the chords Dm, A, and D are indicated with their respective fingerings: Dm (5 5 5 5 V), A (0 0 0 0 V), and D (5 5 5 5 V).

D Gm F Gm F Gm F

Gm F Gm F Gm F

F F

F F

F F D A

D D

D D

1 3 3 3 1 3 1 3 1 0 3 1 2 1 5 3 0 1 3

0 3 2 0 3 1 0 3 0 3 2 0 10 6 5 3

5 8 6 5 3 6 0 3 1 3 1 3 2 0 2 2 2

5 8 6 5 3 6 0 3 1 0 3 2 3 0 1 3 0 4 3 2

rit.

0 0 0 2 3 2 0 0 0 0 0 0 2 1 2 2 2 0 2 0 0 0 0 2 2 2 1 2

0 0 0 2 2 0 0 0 0 0 0 2 1 2 2 2 0 2 0 0 0 0 2 2 2 3 0

2 2 2 2 2 4 5 4 7 5 4 5 4 0 0 0 0 0 2 4 2 5 4 2 4 2 0

3 3 3 3 3 0 2 0 4 2 0 0 0 0 0 0 0 0 0 0 0 0 3 3 3 3 5 3 3 3 3 5 3

D.C. al Fine

Offene Frage / Open Question

Jürg Hochweber

Ukulele

Chords: Gm, Dm, C, F, D, Cm, Bb7, A7, Eb

Fine

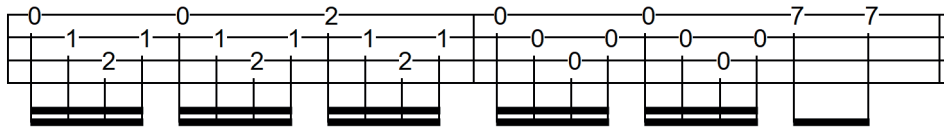
D.S. al Fine

Ukulelen-Tabulaturen

Tabulaturen sind zwar sehr praktisch zum lesen, sie sind für Ukulele Standard, da dadurch verschiedene Ukulelen-Stimmungen verwendet werden können. Doch lassen sich gewisse Elemente schlecht darstellen, wie etwa Fingersätze für Greifhand und Zupfhand/Schlaghand.

Auch ist das Weiterklingen einzelner Töne (meist Hauptmelodie) über die Folgenden nicht klar geregelt.

Deshalb musst du oft selber entscheiden, welche Töne du liegenlassen sollst und wo du ganze Griffe greifen musst wie im folgenden Beispiel:

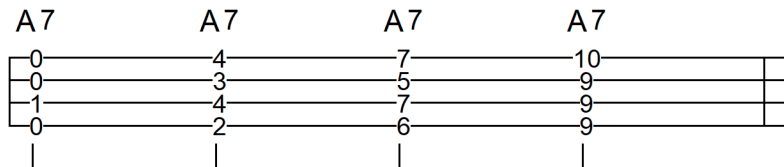


Natürlich könnte man auf Kosten der Lesbarkeit auch irgendwie Fingersätze etc. dazu-schreiben, was aber nicht üblich ist.

Ich habe in diesem Heft die Akkorde zusätzlich mit Symbolen (C, Am, D7 usw.) versehen.

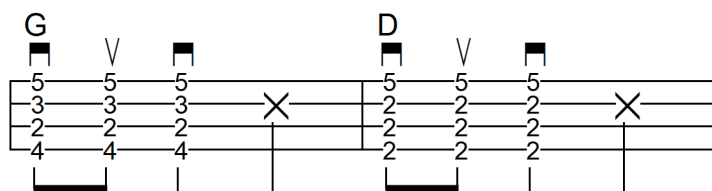
Sie dienen nur der Lesbarkeit und gelten nur für die Stimmung $g'-c'-e'-a'$.

Und beachte, dass ein Akkord wie z.Bsp. A7 in verschiedenen Formen (Lagen) erscheinen kann:

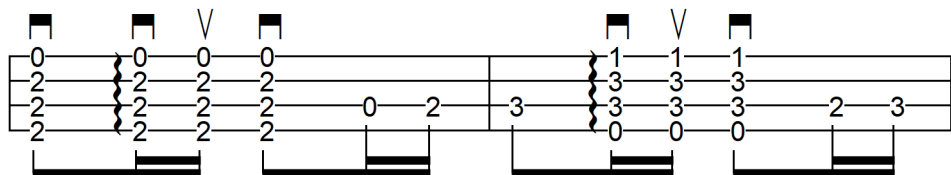


Übrigens ist dieses Heft auch mit tiefgestimmter g-Saite spielbar, da diese Saite nirgends für die Melodie verwendet wird.

Das X im folgenden Beispiel steht für einen beliebigen Schlag mit der rechten Hand auf die Saiten oder den Korpus der Ukulele:



Die Wellenlinie vor einem Akkord steht für ein *rasgueado* („geschrammelt“, „gerasselt“) Schlage mit 3-4 Fingern der rechten Hand über die Saiten, meist in der Reihenfolge: Kleiner-Ring-Mittel-Zeigfinger. Du kannst auch mit einem Finger etwas langsam über die Saiten streichen, so dass ein perlender Eindruck entsteht. Sei kreativ!



Dieses Heft ist für Fortgeschrittene gedacht. Wenn du damit nicht klar kommst, übe zuerst die Stücke im ersten Band, dort findest du auch die üblichen Zeichen der Tabulatur.

More Books by Jürg Hochweber:

Stufe, Level	Werk, Book	Seiten Pages	Jahr Year
schwer / <i>difficult</i>	Finger-Übungen gegen die Gitarre Finger-Exercises Against the Guitar. <i>Coming soon</i>		2023
mittel / <i>intermediate</i>	«Ukulele in Action, Vol.4» , 19 Ukulele Solos	28	2023
mittel-schwer / <i>advanced</i>	«Ukulele in Action, Vol.3» , 19 Ukulele Solos	28	2023
mittel / <i>intermediate</i>	“Trios for 2 Violins + Cello”	24	2022
mittel / <i>intermediate</i>	“Violin + Guitar” Vol. 1 , Vol. 2	24	2021
mittel / <i>intermediate</i>	“ Easy Flamenco , Duet Version”	34	2021
leicht / <i>easy</i>	“Gitarren-Zauber” / “Guitar-Magic”	44	2020
mittel-schwer / <i>advanced</i>	«Ukulele in Action 2» , 14 Ukulele Solos	28	2020
leicht / <i>easy</i>	«Drillinge» , 12 <i>easy guitar trios</i>	72	2019
leicht / <i>easy</i>	«Gitarre für Schlaue» / «Guitar For Smart People»	30	2019
mittel / <i>intermediate</i>	«Acoustic Rock Guitar»	30	2019
leicht / <i>easy</i>	«Ukulele in Action 1» , 17 Solos	26	2018
leicht / <i>easy</i>	“Jugend- und Kinderlieder”	20	2017
mittel / <i>intermediate</i>	«Duette» pdf	45	2016
sehr leicht / <i>very easy</i>	«Die ersten Gitarrentricks» / «First Guitar-Tricks»	42	2010
leicht / <i>easy</i>	«Wir starten durch» / “We Take Off“ pdf	30	2009
mittel-schwer / <i>advanced</i>	«Faszination Gitarre» pdf	44	2008
leicht-mittel / <i>intermediate</i>	«Fingerspiele» / «Fingergames»	48	2007
leicht / <i>easy</i>	«Leichte trad. Lieder zum Begleiten»	44	2007
sehr leicht / <i>very easy</i>	«Erste Schritte / <i>First Steps</i> »	20	2004
leicht / <i>easy</i>	«Leichte Gitarrenmelodien», mit 2. Git. pdf	20	2004
mittel / <i>intermediate</i>	«Guitar Trends 2» pdf	22	2003
schwer / <i>difficult</i>	«minimal-maximal» pdf	10	2003
leicht / <i>easy</i>	«Gitarren-Duette» pdf	42	2003
leicht / <i>easy</i>	«Guitar Trends 1» pdf	22	2002
leicht / <i>easy</i>	«Easy Flamenco»	18	2001
leicht / <i>easy</i>	«45 trad. Weihnachtslieder» / “ <i>Trad. Christmas</i> ”	48	2000
schwer / <i>difficult</i>	«Das Arpeggio-Buch für Gitarren-Profis» pdf	42	2000
mittel-schwer / <i>advanced</i>	«Trad. Weihnachtslieder» arrang. für Solo-Guit pdf	18	2000
sehr leicht / <i>very easy</i>	«Petits Jeux pour la Guitare» 1, Combre, C 5844	20	1999
leicht / <i>easy</i>	«Petits Jeux pour la Guitare» 2, Combre, C 5845	18	1999
mittel / <i>intermediate</i>	«Petits Jeux pour la Guitare» 3, Combre, C 5846	20	1999
mittel-schwer / <i>advanced</i>	«Jazzrock-Rockjazz», Combre, C 5848	16	1997
mittel / <i>intermediate</i>	«Gitarrenfiguren»	20	1996
mittel / <i>intermediate</i>	«Guitare Rock Classique», Combre, C 5697	20	1995
mittel / <i>intermediate</i>	«Walzerträume», Schott AV 6119	16	1994
mittel / <i>intermediate</i>	«Wundergitarre»	12	1993
mittel-schwer / <i>advanced</i>	«Anspielungen»	30	1990
schwer / <i>difficult</i>	«Prunkstücke»	30	1989
mittel / <i>intermediate</i>	«Die andere Saite», Band 1	48	1988
mittel- schwer / <i>advanced</i>	«Die andere Saite», Band 2	48	1987